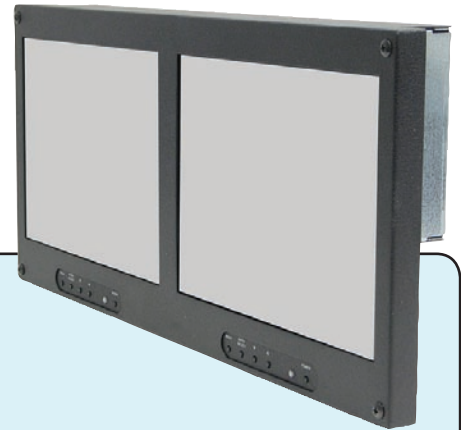
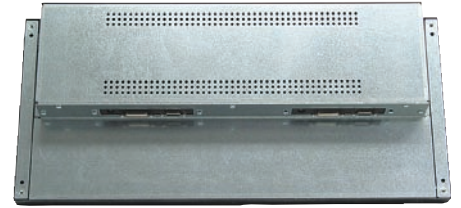
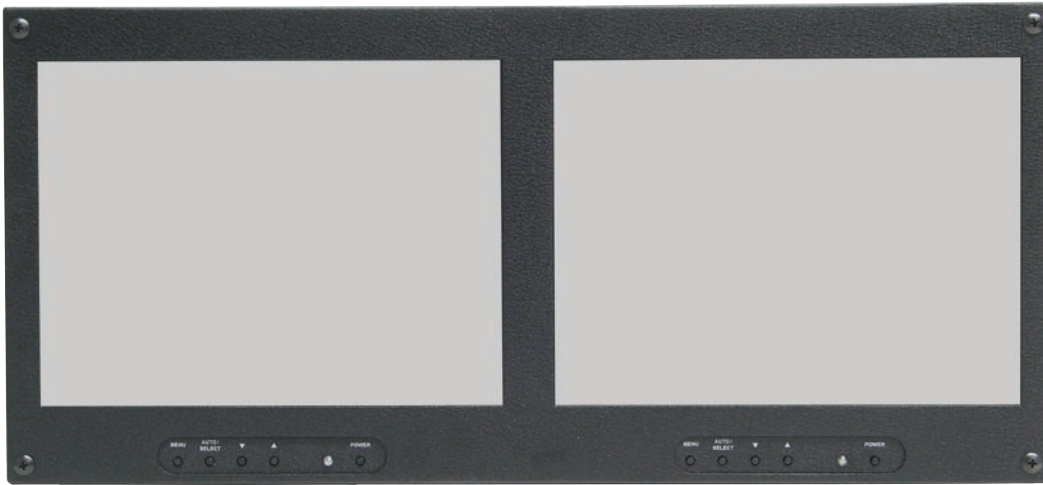


DUAL 10.4" LCD RACK MOUNT MONITOR (5U)



- Dual 10.4" TFT LCD display (1024 x 768 resolution) in only 5U (8.75") of rack space.
- Both monitors feature ARGB (Analog RGB) and DVI-D signal inputs.
- Housed in rugged steel construction with a black powder coat finish.
- Supplied with VGA cables, AC/DC adapter and power cord.
- Optional Lexan™ screen protection available (L).

GENERAL SPECIFICATIONS

Dimensions:

19.0" (W) x 8.75" (H) x 2.35" (D)
(1.65" (D) behind rack mounting rails).

Weight:

12 lbs

Power:

110 - 240 VAC, 50/60 Hz.
60 Watts max.

On-Screen Controls:

Brightness, Contrast, Horizontal & Vertical
Position, Auto Adjust, OSD H & V Position, Input Select
Color Temp., Reset.

Plug & Play:

DDC1 and DDC2B

Temperature:

Operating: 0°C to 50°C
Storage: -20°C to 60°C

Humidity:

Operating: 10 to 90% RH (max)

Input Signal (VGA):

R.G.B. analog video, TTL H & V sync.

Input Signal (Digital):

DVI-D (TDMS).

Input Connectors:

Analog: 15-pin mini D-Sub.

Colors Available:

Black.

Specifications subject to change without notice.

DISPLAY SPECIFICATIONS (APPLY TO EACH DISPLAY)

Display Type:

Active matrix TFT LCD

Display area:

10.4" Diagonal.

Colors Displayed:

262K colors.

Contrast Ratio:

500:1 typ.

Brightness:

350 cd/m² typ.

Viewing Angle:

Horizontal: 178°

Vertical: 178°

Response Time:

40ms Typ.

Resolution:

VGA up to 1024 x 768.

Horizontal Frequency:

31.5 to 80KHz.

Vertical Frequency:

56 to 75 Hz.

Screen Protection:

Lexan™ optional.

MODEL NUMBER

LTRM-102(X)

Blank = No Screen Protection.
L = Lexan™ Screen Protection.

Contact us about other options and our additional rack mount products.



Tel: 760-364-2900
web: www.lan-tek.net
P. O. Box 549

LAN TEK
1-800-729-7654

Fax: 760-364-4997
email: lantek@earthlink.net
Yucca Valley, CA 92286